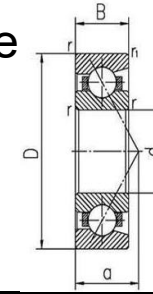




Large size and super large  
size single row angular  
contact ball bearings

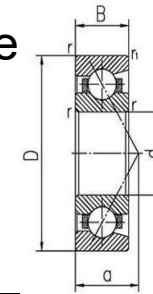
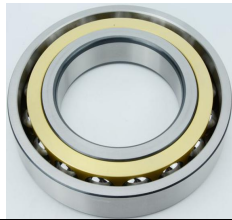
*Dalian Goldbull Bearing Co.,Ltd*  
[www.gb-bearing.com](http://www.gb-bearing.com)

# Large size and super large size singler row angular contact ball be



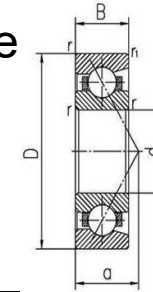
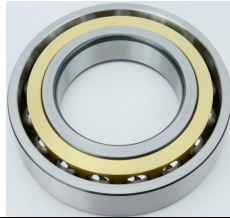
Bearing Designations		Principal Dimensions (mm)			Basic load rating (kN)		Speed ratings (rpm)		Weight (kg)
Old Spec	Designations	d	D	B	Dynamic ( Cr )	Static ( Cor )	Grease	Oil	
1036936	71936C	180	250	33	159	197	3200	4300	5.0
66136	7036B	180	280	46	190	235	1650	2200	10.0
36236	7236C	180	320	52	333	418	2700	3200	17.9
46236	7236AC	180	320	52	317	399	1700	2200	17.9
66236	7236B	180	320	52	538	917	1600	1900	11.5
66336	7336B	180	380	75	404	536	1300	1800	37.0
46138	7038AC	190	290	46	220	270	1800	2400	10.7
46238	7238AC	190	340	55	257	430	1500	2000	22.4
66336	7338B	190	400	78	430	600	1150	1600	48.0
1036940	71940C	200	280	38	200	249	3400	5100	7.3
46140	7040AC	200	310	51	264	331	1700	2200	14.9
36240	7240C	200	360	58	363	487	2500	3000	25.2
46240	7240AC	200	360	58	345	462	1500	2000	25.2
66240	7240B	200	360	58	309	417	1300	1800	25.8
66340	7340B	200	420	80	450	660	1000	1500	53.0
66144	7044BM	220	340	56	255	350	1100	1700	18.2
46244	7244ACM	220	400	65	423	606	1100	1600	36.1
66344	7344B	220	460	88	480	730	1000	1400	71.0
1036948	71948C	240	320	38	207	287	2700	4000	7.2
66148	7048B	240	360	56	250	380	1150	1600	19.5

# Large size and super large size singler row angular contact ball be



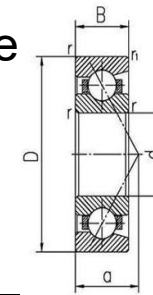
Bearing Designations		Principal Dimensions (mm)			Basic load rating (kN)		Speed ratings (rpm)		Weight (kg)
Old Spec	Designations	d	D	B	Dynamic ( Cr )	Static ( Cor )	Grease	Oil	
66248	7248B	240	440	72	419	626	1000	1500	50.9
66348	7348B	240	500	95	540	850	850	1200	89.0
1046952	71952AC	260	360	46	260	380	900	1400	13.8
66252	7252B	260	480	80	495	790	850	1200	67.0
1046956	71956AC	280	380	46	268	405	800	1300	15.7
66156	7056B	280	420	65	310	500	900	1300	31.0
66256	7256B	280	500	80	500	840	800	1200	70.5
66160	7060B	300	460	74	360	620	900	1200	43.0
1046964	71964AC	320	440	56	340	580	940	1400	26.5
46164	7064AC	320	480	74	416	700	800	1100	47.5
1046968	71968AC	340	460	56	330	575	900	1350	24.5
46168	7068AC	340	520	82	510	1050	800	1100	61.0
66268	7268B	340	620	92	685	1320	700	1000	128.0
	71872AC	360	440	38	228	430	1800	2650	12.5
1046972	71972AC	360	480	56	340	630	900	1300	29.5
	71972A	360	480	56	330	620	850	1000	29.5
36172	7072C	360	540	82	532	965	600	1000	65.2
66272	7272B	360	650	95	635	1240	700	950	152.0

# Large size and super large size singler row angular contact ball be



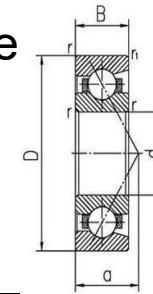
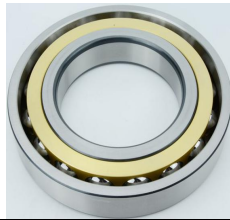
Bearing Designations		Principal Dimensions (mm)			Basic load rating (kN)		Speed ratings (rpm)		Weight (kg)
Old Spec	Designations	d	D	B	Dynamic ( Cr )	Static ( Cor )	Grease	Oil	
	71876AC	380	480	46	285	495	860	1200	18.5
1066976	71976B	380	520	65	355	630	500	800	42.1
46176	7076AC	380	560	82	495	940	810	1100	66.0
66176	7076B	380	560	82	455	880	760	1000	66.0
1046980	71980A	400	540	65	410	760	810	1100	42.5
46180	7080A	400	600	90	590	1170	740	1000	91.5
66180	7080B	400	600	90	515	1010	710	960	91.5
1046984	71984A	420	560	65	410	820	810	1100	46.5
1066984	71984B	420	560	65	355	670	810	1100	46.5
46184	7084A	420	620	90	590	1160	710	960	97.0
66184	7084B	420	620	90	525	1040	680	910	93.0
1046988	71988AC	440	600	74	495	1050	740	1000	60.0
46188	7088A	440	650	94	635	1300	710	960	100.0
66188	7088B	440	650	94	560	1170	630	940	100.0
	70892A	460	580	37	259	550	760	1000	25.5
	71892A	460	580	56	362	760	760	1000	34.5
1046992	71992AC	460	620	74	495	1050	680	740	58.5
46192	7092A	460	680	100	675	1450	670	910	121.0
66192	7092B	460	680	100	605	1280	610	800	121.0

# Large size and super large size singler row angular contact ball be



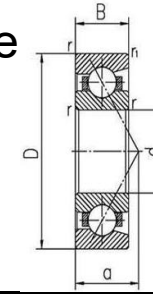
Bearing Designations		Principal Dimensions (mm)			Basic load rating (kN)		Speed ratings (rpm)		Weight (kg)
Old Spec	Designations	d	D	B	Dynamic ( Cr )	Static ( Cor )	Grease	Oil	
46196	7096A	480	700	100	685	1540	630	840	126.0
66196	7096B	480	700	100	610	1330	550	740	126.0
	708/500A	500	620	37	270	610	660	890	27.5
	718/500AM	500	620	56	390	810	600	850	37.4
10469/500	719/500A	500	670	78	540	1210	620	850	77.5
461/500	70/500A	500	720	100	700	1610	610	810	132.0
661/500	70/500B	500	720	100	620	1410	550	760	132.0
	718/530A	530	650	56	380	890	620	840	38.5
10469/530	719/530AC	530	710	82	600	1350	610	810	93.0
461/530	70/530A	530	780	112	815	1880	550	740	178.0
661/530	70/530B	530	780	112	725	1690	510	680	182.0
	718/560A	560	680	56	385	920	600	810	42.0
10469/560	719/560A	560	750	85	580	1270	550	740	107.0
461/560	70/560A	560	820	115	880	2140	520	710	193.0
	708/600A	600	730	42	330	730	560	740	39.0
	718/600ACM	600	730	60	405	880	720	1120	54.6
10469/600	719/600AC	600	800	90	700	1720	740	710	123.0
461/600	70/600A	600	870	118	865	2150	470	620	230.0

# Large size and super large size singler row angular contact ball be



Bearing Designations		Principal Dimensions (mm)			Basic load rating (kN)		Speed ratings (rpm)		Weight (kg)
Old Spec	Designations	d	D	B	Dynamic ( Cr )	Static ( Cor )	Grease	Oil	
461/6030	70/630A	630	920	128	935	2460	420	550	275.0
	718/670AC	670	820	69	540	1280	490	640	77.5
461/670	70/670A	670	980	136	1140	3180	470	630	345.0
	718/710AC	710	870	74	580	1630	440	580	94.5
10469/710	719/710AC	710	950	106	830	2220	810	1120	500.0
461/710	70/710A	710	1030	140	1160	3200	400	530	375.0
	718/750AC	750	920	78	630	1850	400	530	112.0
	70/750A	750	1090	150	1270	3630	350	470	450.0
	70/800A	800	1150	155	1320	3780	330	440	510.0
	718/850A	850	1030	82	675	1850	330	440	141.0
	70/850A	850	1220	165	1490	4600	290	400	605.0
	718/900AC	900	1090	85	670	1830	300	400	163.0
	70/900A	900	1280	170	1520	4980	270	370	675.0
	70/950A	950	1360	180	1590	5150	250	350	800.0
	718/1000A	1000	1220	100	900	2700	270	360	245.0
	70/1000A	1000	1420	185	1590	5450	210	310	905.0

# Large size and super large size singler row angular contact ball be



Bearing Designations		Principal Dimensions (mm)			Basic load rating (kN)		Speed ratings (rpm)		Weight (kg)
Old Spec	Designations	d	D	B	Dynamic ( Cr )	Static ( Cor )	Grease	Oil	
	70/1060A	1060	1500	195	1640	5650	200	310	1060.0
	718/1120A	1120	1360	106	1030	3700	190	290	325.0
	70/1120A	1120	1580	200	1680	5800	180	280	1160.0
	718/1180C	1180	1420	106	865	3650	100	200	329.0
	70/1180A	1180	1660	212	1700	6000	170	230	1340.0
	708/1250A	1250	1500	80	780	2650	180	250	300.0
	718/1250A	1250	1500	112	1110	3900	180	250	395.0
	70/1250A	1250	1750	218	1740	6500	160	220	1580.0